

AGGCCGTTGAGCACCGCCGCCGAAGGAATGGTGCATGCAAGGAGATGGCGCCCAACAGTCCCCGGCCACGGGG
 TCCGGCAACTCGTGCGCGCGCGTTCCCTTACCACGTACGTTCTCTACCGCGGGTTGTCAGGGGGCCGGTGCCCC

4575

CCTGCCACCATAACCCACGCCGAAACAAGCGCTCATGAGCCCGAAGTGGCGAGCCCGATCTTCCCCATCGGTGATG
 GGACGGTGGTATGGGTGCGGCTTTGTTTCGCGAGTACTCGGGCTTACCGCTCGGGCTAGAAGGGGTAGCCACTAC

4650

TCGGCGATATAGGCGCCAGCAACCGCACCTGTGGCGCCGGTGATGCCGGCCACGATGCGTCCGGCGTAGAGGATC
 AGCCGCTATATCCGCGGTCGTTGGCGTGGACACCGCGGCCACTACGGCCGGTGCTACGCAGGCCGCATCTCCTAG

4725

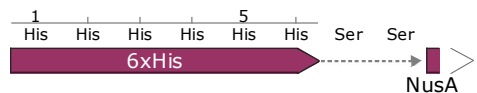
GAGATCGATCTCGATCCCGCGAAATTAATACGACTCACTATAGGGGAATTGTGAGCGGATAACAATTCCCCTCTA
 CTCTAGCTAGAGCTAGGGCGCTTTAATTATGCTGAGTGATATCCCCTTAACAACCTCGCTATTGTTAAGGGGAGAT

4800



GAAATAATTTTGTTTAACTTTAAGAAGGAGATATACATATGGGCAGCAGCCATCACCACCATCACCATTCTAGTA
 CTTTATTAACAATTTGAAATTCTTCCCTCTATATGTATACCGTCGTCGGTAGTGTTGGTAGTGGTAAGATCAT

4875



TGAACAAAGAAATTTTGGCTGTAGTTGAAGCCGTATCCAATGAAAAGGCGCTACCTCGCGAGAAGATTTTTCGAAG
ACTTGTTCCTTTAAACCGACATCAACTTCGGCATAGGTTACTTTTCCGCGATGGAGCGCTCTTCTAAAAGCTTC
1 Met Asn Lys Glu Ile Leu Ala Val Val Glu Ala Val Ser Asn Glu Lys Ala Leu Pro Arg Glu Lys Ile Phe Glu
NusA

4950

CATTGGAAAGCGCGCTGGCGACAGCAACAAAGAAAAAATATGAACAAGAGATCGACGTCCGCGTACAGATCGATC
GTAACCTTTTCGCGCGACCGCTGTCGTTGTTTTCTTTTTTATACTTGTCTCTAGCTGCAGGCGCATGTCTAGCTAG
30 Ala Leu Glu Ser Ala Leu Ala Thr Ala Thr Lys Lys Lys Tyr Glu Gln Glu Ile Asp Val Arg Val Gln Ile Asp
NusA

5025

GCAAAGCGGTGATTTTGACACTTTCGGTCGCTGGTTAGTTGTTGATGAAGTCACCCAGCCGACCAAGGAAATCA
CGTTTTCGCCACTAAAAGTGTGAAAGGCAGCGACCAATCAACAACACTTTCAGTGGGTTCGGCTGGTTCCTTTAGT
55 Arg Lys Ser Gly Asp Phe Asp Thr Phe Arg Arg Trp Leu Val Val Asp Glu Val Thr Gln Pro Thr Lys Glu Ile
NusA

5100

CCCTTGAAGCCGCACGTTATGAAGATGAAAGCCTGAACCTGGGCGATTACGTTGAAGATCAGATTGAGTCTGTTA
GGAACTTCGGCGTGCAATACTTCTACTTTTCGGACTTGGACCCGCTAATGCAACTTCTAGTCTAACTCAGACAAT
80 Thr Leu Glu Ala Ala Arg Tyr Glu Asp Glu Ser Leu Asn Leu Gly Asp Tyr Val Glu Asp Gln Ile Glu Ser Val
NusA

5175

CCTTTGACCGTATCACTACCCAGACGGCAAACAGGTTATCGTGCAGAAAGTGCCTGAAGCCGAACGTGCGATGG
GAAACTGGCATAGTGATGGGTCTGCCGTTTTGTCCAATAGCACGTCTTTCACGCACCTTCGGCTTGCACGCTACC
105 Thr Phe Asp Arg Ile Thr Thr Gln Thr Ala Lys Gln Val Ile Val Gln Lys Val Arg Glu Ala Glu Arg Ala Met
NusA

5250

TGGTTGATCAGTTCGGTGAACACGAAGGTGAAATCATCACCGCGTGGTGAAAAAAGTAAACCGCGACAACATCT
ACCAACTAGTCAAGGCACTTGTGCTTCCACTTTAGTAGTGCCCGCACCACCTTTTTTCATTTGGCGCTGTTGTAGA
130 Val Val Asp Gln Phe Arg Glu His Glu Gly Glu Ile Ile Thr Gly Val Val Lys Lys Val Asn Arg Asp Asn Ile
NusA

5325

CTCTGGATCTGGGCAACAACGCTGAAGCCGTGATCCTGCGCGAAGATATGCTGCCGCGTGAAAACCTCCGCCCTG
GAGACCTAGACCCGTTGTTGCGACTTTCGGCACTAGGACGCGCTTCTATACGACGGCGCACTTTTGAAGGCGGGAC
155 Ser Leu Asp Leu Gly Asn Asn Ala Glu Ala Val Ile Leu Arg Glu Asp Met Leu Pro Arg Glu Asn Phe Arg Pro
NusA

5400

GCGACCGCGTTTCGTGGCGTGCTCTATTCCGTTTCGCCCGGAAGCGCGTGGCGCGCAACTGTTTCGTCACCTCGTTCCA
CGCTGGCGCAAGCACCACGAGATAAGGCAAGCGGGCCTTCGCGCACCGCGCGTTCGACAAGCAGTGAGCAAGGT
180 Gly Asp Arg Val Arg Gly Val Leu Tyr Ser Val Arg Pro Glu Ala Arg Gly Ala Gln Leu Phe Val Thr Arg Ser
NusA

5475

AGCCGAAATGCTGATCGAACTGTTCCGTATTGAAGTGCCAGAAATCGGCGAAGAAGTGATTGAAATTAAGCAG
TCGGCCTTTACGACTAGCTTGACAAGGCATAACTTCACGGTCTTTAGCCGCTTCTTCACTAACTTTAATTTTCGTC
205 Lys Pro Glu Met Leu Ile Glu Leu Phe Arg Ile Glu Val Pro Glu Ile Gly Glu Glu Val Ile Glu Ile Lys Ala
NusA

5550

CGGCTCGCGATCCGGGTTCTCGTGCGAAAATCGCGGTGAAAACCAACGATAAACGTATCGATCCGGTAGGTGCTT
GCCGAGCGCTAGGCCAAGAGCACGCTTTTAGCGCCACTTTTGGTTGCTATTTGCATAGCTAGGCCATCCACGAA
230 Ala Ala Arg Asp Pro Gly Ser Arg Ala Lys Ile Ala Val Lys Thr Asn Asp Lys Arg Ile Asp Pro Val Gly Ala
NusA

5625

GCGTAGGTATGCGTGGCGCGCGTGTTCAGGCGGTGTCTACTGAACTGGGTGGCGAGCGTATCGATATCGTCCTGT
CGCATCCATACGCACCGCGCGCACAAAGTCCGCCACAGATGACTTGACCCACCGCTCGCATAGCTATAGCAGGACA

5700

Cys Val Gly Met Arg Gly Ala Arg Val Gln Ala Val Ser Thr Glu Leu Gly Gly Glu Arg Ile Asp Ile Val Leu

NusA

GGGATGATAACCCGGCGCAGTTCGTGATTAACGCAATGGCACCGGCAGACGTTGCTTCTATCGTGGTGGATGAAG
CCCTACTATTGGGCCGCGTCAAGCACTAATTGCGTTACCGTGGCCGTCTGCAACGAAGATAGCACCACCTACTTC

5775

Trp Asp Asp Asn Pro Ala Gln Phe Val Ile Asn Ala Met Ala Pro Ala Asp Val Ala Ser Ile Val Val Asp Glu

NusA

ATAAACACACCATGGACATCGCCGTTGAAGCCGTAATCTGGCGCAGGCGATTGGCCGTAACGGTCAGAACGTGC
TATTTGTGTGGTACCTGTAGCGGCAACTTCGGCCATTAGACCGCGTCCGCTAACGGCATTGCCAGTCTTGCACG

5850

Asp Lys His Thr Met Asp Ile Ala Val Glu Ala Gly Asn Leu Ala Gln Ala Ile Gly Arg Asn Gly Gln Asn Val

NusA

GTCTGGCTTCGCAACTGAGCGGTTGGGAACCAACGTGATGACCGTTGACGACCTGCAAGCTAAGCATCAGGCGG
CAGACCGAAGCGTTGACTCGCCAACCCTTGAGTTGCACTACTGGCAACTGCTGGACGTTTCGATTTCGTAGTCCGCC

5925

Arg Leu Ala Ser Gln Leu Ser Gly Trp Glu Leu Asn Val Met Thr Val Asp Asp Leu Gln Ala Lys His Gln Ala

NusA

AAGCGCACGCAGCGATCGACACCTTACCAAATATCTCGACATCGACGAAGACTTCGCGACTGTTCTGGTAGAAG
TTCGCGTGCCTCGCTAGCTGTGGAAGTGGTTTATAGAGCTGTAGCTGCTTCTGAAGCGCTGACAAGACCATCTTC

6000

Glu Ala His Ala Ala Ile Asp Thr Phe Thr Lys Tyr Leu Asp Ile Asp Glu Asp Phe Ala Thr Val Leu Val Glu

NusA

AAGGCTTCTCGACGCTGGAAGAATTGGCCTATGTGCCGATGAAAGAGCTGTTGGAAATCGAAGGCCTTGATGAGC
TTCCGAAGAGCTGCGACCTTCTTAACCGGATACACGGCTACTTTCTCGACAACCTTTAGCTTCCGGAACACTCTCG

6075

Glu Gly Phe Ser Thr Leu Glu Glu Leu Ala Tyr Val Pro Met Lys Glu Leu Leu Glu Ile Glu Gly Leu Asp Glu

NusA

CGACCGTTGAAGCACTGCGCGAGCGTGCTAAAAATGCACTGGCCACCATTGCACAGGCCCCAGGAAGAAAGCCTCG
GCTGGCAACTTCGTGACGCGCTCGCACGATTTTACGTGACCGGTGGTAACGTGTCCGGGTCTTCTTTTCGGAGC

6150

Pro Thr Val Glu Ala Leu Arg Glu Arg Ala Lys Asn Ala Leu Ala Thr Ile Ala Gln Ala Gln Glu Glu Ser Leu

NusA

GTGATAACAAACCGGCTGACGATCTGCTGAACCTTGAAGGGTAGATCGTGATTTGGCATTCAAACCTGGCCGCC
CACTATTGTTTGGCCGACTGCTAGACGACTTGAACCTTCCCATCTAGCACTAAACCGTAAGTTTACCAGGCGGG

6225

Gly Asp Asn Lys Pro Ala Asp Asp Leu Leu Asn Leu Glu Val Asp Arg Asp Leu Ala Phe Lys Leu Ala Ala

NusA

GTGGCGTTTGTACGCTGGAAGATCTCGCCGAACAGGGCATTGATGATCTGGCTGATATCGAAGGGTTGACCGACG
CACCGCAAACATGCGACCTTCTAGAGCGGCTTGTCCCGTAACTACTAGACCGACTATAGCTTCCCAACTGGCTGC

6300

Arg Gly Val Cys Thr Leu Glu Asp Leu Ala Glu Gln Gly Ile Asp Asp Leu Ala Asp Ile Glu Gly Leu Thr Asp

NusA

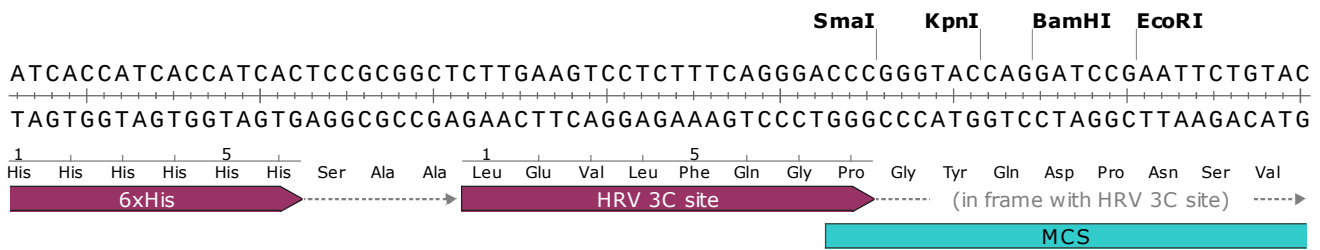
AAAAAGCCGGAGCACTGATTATGGCTGCCCGTAATATTTGCTGGTTCGGTGACGAAGCGACTAGTGGTTCTGGTC
TTTTTCGGCCTCGTGACTAATACCGACGGGCATTATAAACGACCAAGCCACTGCTTCGCTGATCACCAAGACCAG

6375

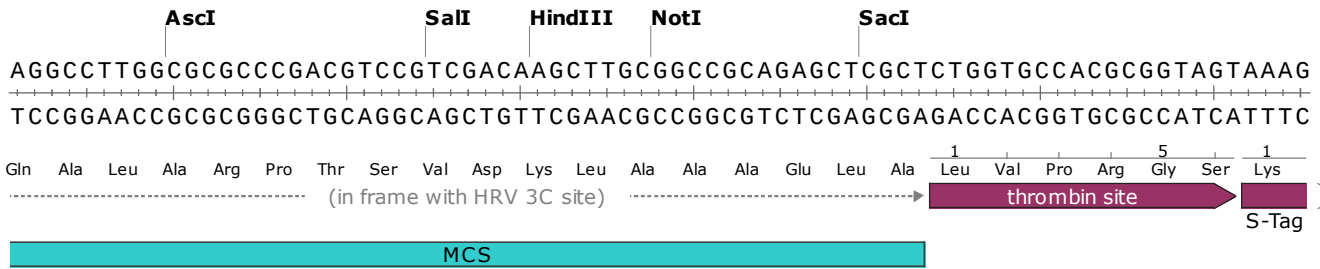
Glu Lys Ala Gly Ala Leu Ile Met Ala Ala Arg Asn Ile Cys Trp Phe Gly Asp Glu Ala Thr Ser Gly Ser Gly

NusA

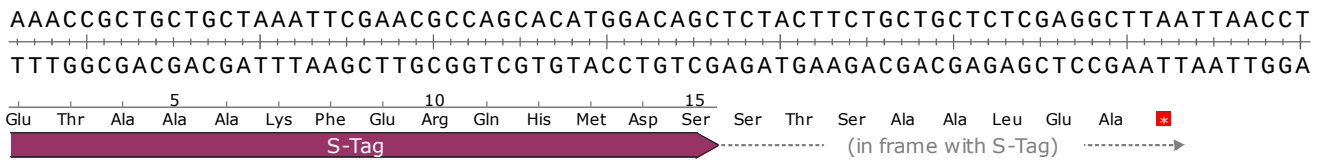
6xHis



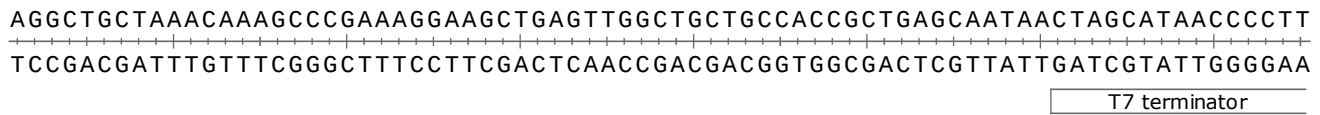
6450



6525



6600



6675

